

TENAX COVERET L

Woven net

PHYSICAL CHARACTERISTICS	TEST METHOD	UNIT	COVERET L	NOTES
POLYMER			POLYETHYLENE	-
MESH SHAPE			QUADRANGULAR	-
COLOUR			WHITE	-
TYPE OF COVERING		%	40	-
PACKAGING			PE BAG	-

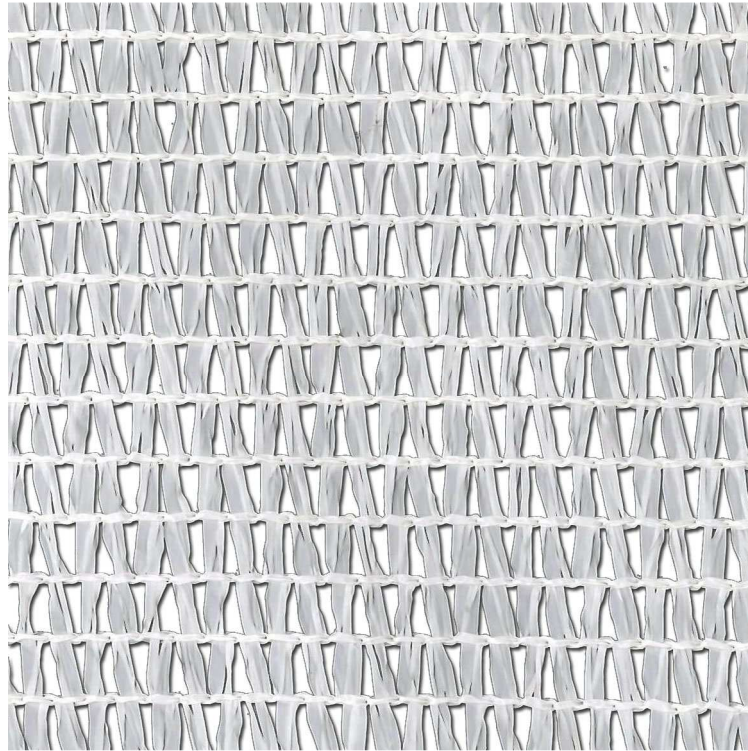
DIMENSIONAL CHARACTERISTICS	TEST METHOD	UNIT	COVERET L	NOTES		
UNIT WEIGHT		g/m ²	60.0	b		
NET WIDTH		m	1.8	1.8	1.8	-
ROLL WIDTH		m	1.8	0.95	0.95	-
ROLL LENGTH		m	100	10	25	-
COVERED AREA		m ²	180	18	45	-
ROLL DIAMETER		m	0.22	0.12	0.16	-
ROLL WEIGHT		kg	11.2	1.53	3.4	-
BOX WEIGHT		mm		12.2	13.6	-
ROLLS PER BOX		n°		8	4	-

TECHNICAL CHARACTERISTICS	TEST METHOD	UNIT	COVERET L	NOTES
MD TENSILE STRENGTH	ISO 13934-1	kN/m	4.8	a, b
TD TENSILE STRENGTH	ISO 13934-1	kN/m	5.9	a, b

NOTE:

- a) MD: machine direction
TD: trasversal direction
- b) Tolerances \pm 4%





Just Indicating

The data contained in this publication are based on the knowledge available at the time of printing and may be subjected to amendments due to changes of the methods of testing and/or manufacturing. All dimensions and properties are reported as typical values. Tenax nets are thermoplastic products subjected to shrinkage. MD: longitudinal direction. TD: transversal direction. Tenax Spa Quality System has been assessed and registered in agreement with ISO 9001:2008 Standard.



SGS ITALY Certificate n° IT93/0008.01
SGS U.K. Certificate n° IT93/2568.01



Tenax Spa Quality System has been assessed and registered in agreement with ISO:9001:2008 by SGS Italy and SGS UK.

The TENAX Laboratory has been created in 1980 and has been continuously improved with the purpose of assuring unequalled technical development of the products and accurate Quality Control. The TENAX Laboratory can perform mechanical, hydraulic and durability tests, according to the most important international standards like ISO, CEN, ASTM, DIN, BSI, UNI.



TENAX SpA
Via dell'Industria, 3
23897 Viganò (LC)
Tel. +39 039.9219300
Fax +39 039.9219290
customer.service@tenax.net